

# ARCHER

*Archer* is a lovely 1989 70' Traditional style narrowboat with a Mike Heywood hull.

She is traditional in stern, and traditional in feel. She has a thumping Lister JP2 hand start engine with speed wheel & push / pull gear change, and a sympathetically reproduced boatman's cabin with the cross bed and range. All the windows on board are brass opening portholes.

In a deviation from the traditional, the webasto central heating and solar panels on board are the modern luxuries!

From the 5'6" well deck (large water tank under) into the large saloon which is nearly 16' long. Open plan with freestanding furniture, there is a small dining table with two chairs, a solid fuel stove and a couple of comfortable armchairs.

The galley follows. There is a brass opening porthole in the galley ceiling for additional light & ventilation, and the rest of the galley houses the gas hob & oven, sink, washing machine and 12v fridge. In addition to the unit cupboards in here, there is a huge floor to ceiling corner cupboard backing onto the bathroom.

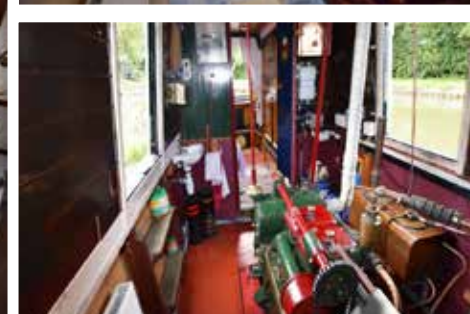
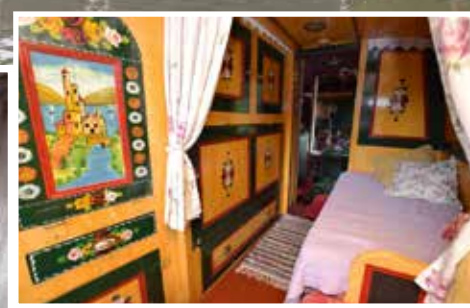
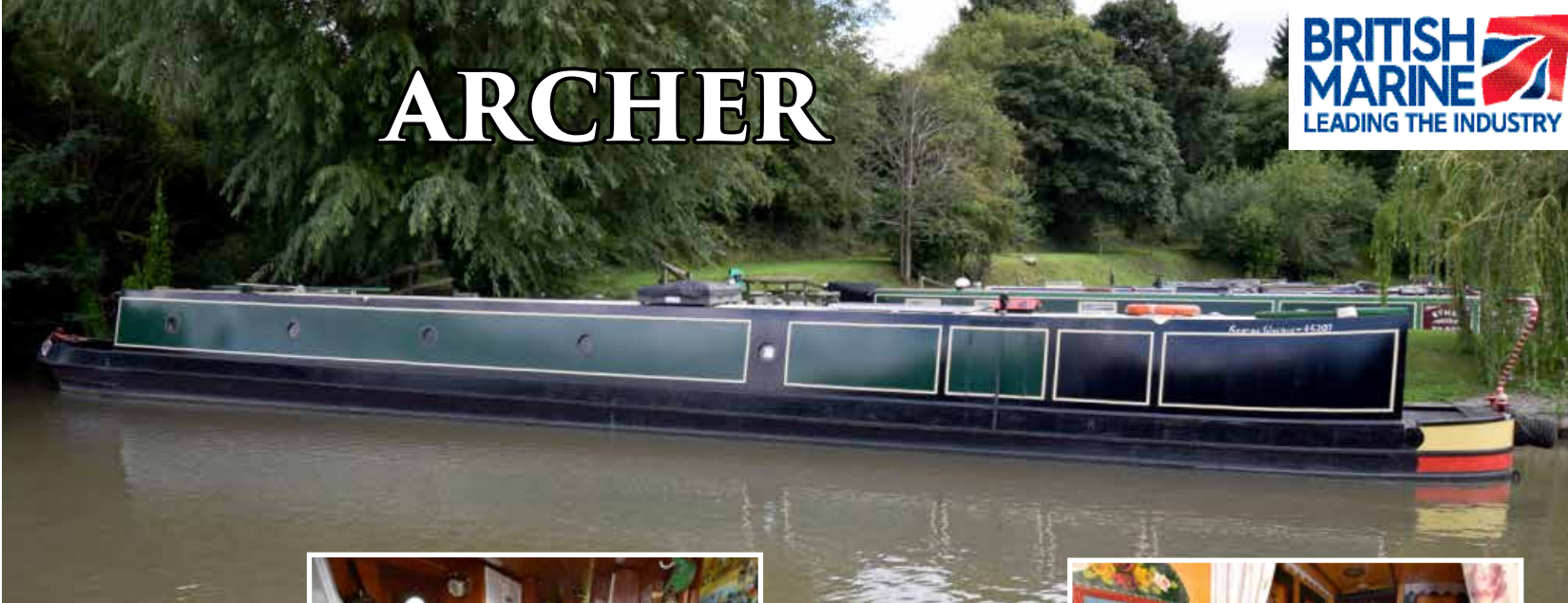
So into the bathroom; the shower is over the 4' bath, and the Thetford Porta Potti and basin are opposite with a heated towel rail in between.

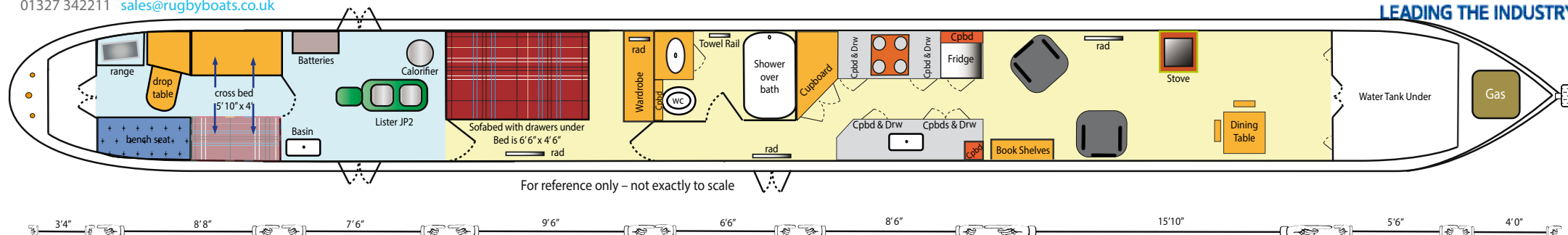
The bedroom follows. The bed currently is a large 6' 6" x 4' 6" sofa bed, so this room also serves as a pleasant day room, but a fixed double could easily be installed if preferred. There is a large wardrobe at the foot of the bed.

The spacious engine room follows with the Lister JP2, a wash basin, 2 side hatches (one with steps) and the various electrical units.

On into the boatman's cabin. A delightful room finished in a traditional style with scumbled paint, red & green trimming and roses and castles. There is a solid fuel range next to the drop down table with crumb drawer under, and the cross bed extends the width of the boat.

*Archer* is a charming boat, ready for immediate living aboard or extended cruising.





## MAIN DETAILS

**Style:** Traditional • **Length:** 70' • **Berths:** 2 + boatman's cabin • **Builder & Fit Out:** Mike Heywood / Professional fit out •  
**Steel thicknesses:** 10 / 6 / 4 • **Year:** 1989 • **Reg No:** CRT 45207 • **Boat Safety:** Aug 2018

### DIMENSIONS

<b>Well deck:</b>	5' 6"
<b>Saloon:</b>	15' 10"
<b>Galley:</b>	8' 6"
<b>Bathroom/wc:</b>	6' 6"
<b>Bedroom:</b>	9' 6"
<b>Engine Room:</b>	7' 6"
<b>Stern cabin:</b>	8' 8"
<b>Stern deck:</b>	3' 4"
<b>Internal headroom:</b>	6' 3"
<b>Draught:</b>	2' 0"

### PROPULSION

<b>Engine:</b>	Lister JP2 handstart with speed wheel & push / pull gear change
<b>Hours:</b>	Not recorded
<b>Transmission:</b>	Lister Manual
<b>Fuel tank:</b>	Not recorded
<b>Weedhatch:</b>	Under stern deck
<b>Bowthruster:</b>	No

### CABIN FIT OUT AND FURNISHINGS

<b>Insulation:</b>	Polystyrene
<b>Ballast:</b>	Concrete paving slabs
<b>Ceiling:</b>	Horizontal Piranha Pine T&G
<b>Cabin sides:</b>	Horizontal Piranha Pine T&G
<b>Hull sides:</b>	Painted Sapele faced ply
<b>Flooring:</b>	Carpet in saloon. Vinyl in galley, bathroom & bedroom, wood in engine room / stern cabin
<b>Side doors:</b>	Yes. One in corridor aft of galley, two in engine room
<b>Windows etc:</b>	Opening brass portholes throughout. Opening brass porthole in galley ceiling
<b>Seating:</b>	2 armchairs, 2 collapsible dining chairs. Boatmans cabin benches
<b>Cooking:</b>	Statesman Legacy 4 burner gas hob, oven & grill with tray drawer under
<b>Fridge / Freezer:</b>	Batts Marine 12v fridge with icebox
<b>Galley worktops:</b>	Laminated
<b>Washer / Dryer:</b>	Indesit 230v 4kg Top Loader
<b>WC:</b>	Thetford Porta Potti Qube
<b>Shower:</b>	Curtained over bath
<b>Basin:</b>	Ceramic counter sunk over cupboard
<b>Berths:</b>	6'6" x 4'6" sofa bed (room for a fixed double if preferred). Boatman's cabin 5' 10" x 4'
<b>Media:</b>	TV aerial connection cable

### MAINTENANCE

<b>Last blacked:</b>	2016
<b>Anodes:</b>	Replaced in 2016
<b>Engine serviced</b>	Oil changed annually

### HEATING & WATER SUPPLY

<b>Tank &amp; capacity:</b>	Stainless steel under well deck 900 litres
<b>Stove:</b>	Firebox solid fuel stove and solid fuel range in the Boatman's cabin
<b>Central heating:</b>	Webasto Thermo Top C diesel fired heating 4 rads & a towel rail
<b>Hot Water:</b>	Calorifier, Immersion

### POWER

<b>Alternators:</b>	Believed to be 1x 55amps
<b>Batteries:</b>	4x 110amps domestic with Adverc management system. Batteries were new in 2012
<b>Lighting:</b>	12v throughout
<b>Inverter/charger:</b>	Plug in inverter operated from a socket in the front cabin. Numax 12v 20amp charger
<b>Other electrical:</b>	Landline hookup, 250w Solar panels with Victron Blue Solar charger MPPT 75/15
<b>Gas:</b>	2x 13kg with changeover valve in bow locker

### Important Notice:

In this transaction we are acting as Brokers only. We are informed that this sale is not related to the Owner's business, trade or profession. Whilst every care has been taken in their preparation, the correctness of these particulars is not guaranteed. The particulars are intended only as a guide and they do not constitute a term of any contract. A prospective buyer is strongly advised to check the particulars and where appropriate to have the vessel fully surveyed and inspected, sea trialled and opened up.

### STORAGE

<b>Shelving:</b>	Saloon x5, bedroom x1,
<b>Cupboard:</b>	Galley x7, Bathroom x2, Stern cabin x5
<b>Wardrobe:</b>	Bedroom x1
<b>Drawers:</b>	Galley x4, Stern cabin x3
<b>Other:</b>	Floor to ceiling cupboard in galley, storage under bed

### NAVIGATION EQUIPMENT

Ropes, fenders, pole / hook, plank, mooring pins, windlasses.  
 Superstructure painted in 2016

### NB

Not included in the sale: Personal items incl pictures & photos, leather armchair, saucepans & kitchen items

## £44,950